



User manual
Pressure control panel
BT2000-2

Contents

| | | |
|----------|--|-----------|
| 1 | Introduction | 4 |
| 2 | Description..... | 5 |
| 2.1 | Intended use | 5 |
| 2.2 | Misuse | 5 |
| 2.3 | Identification / label | 5 |
| 2.4 | Environment | 6 |
| 2.4.1 | Temperatures..... | 6 |
| 2.4.2 | Degree of cleanliness | 6 |
| 2.4.3 | Emissions..... | 6 |
| 2.5 | Standards and laws..... | 6 |
| 3 | Safety..... | 8 |
| 3.1 | Basic information on the safety instructions..... | 8 |
| 3.2 | Safety instructions | 9 |
| 3.3 | Emergencies and safety devices | 11 |
| 3.4 | Qualification of the operating and maintenance personnel | 11 |
| 4 | Design and function..... | 13 |
| 4.1 | Design | 13 |
| 4.2 | Functional description | 14 |
| 4.3 | Technical data | 15 |
| 4.4 | Boundaries and interfaces | 15 |
| 5 | Installation | 16 |
| 5.1 | General information..... | 16 |
| 5.2 | Installation work | 16 |
| 5.2.1 | Installation..... | 16 |
| 5.2.2 | Connecting the incoming and outgoing lines | 16 |
| 5.3 | Checking the system | 16 |
| 5.3.1 | Pressure test with purge gas | 16 |
| 6 | Commissioning | 18 |
| 6.1 | Preparations for commissioning..... | 18 |
| 6.2 | Procedure for commissioning..... | 18 |
| 6.2.1 | Connecting the process gas source..... | 18 |
| 6.2.2 | Flushing in the process gas to the process..... | 18 |
| 7 | Operation | 20 |
| 7.1 | General information on operation..... | 20 |
| 7.2 | Gas supply interruption | 20 |
| 7.2.1 | Interruptions to operation for less than 48 hours | 20 |
| 7.2.2 | Interruptions to operation for more than 48 hours..... | 20 |
| 7.2.3 | Putting the control panel into a safe condition | 20 |
| 7.3 | Exchanging the process gas source | 21 |
| 8 | Maintenance, cleaning and repairs..... | 23 |
| 8.1 | General information on maintenance | 23 |
| 8.2 | Flushing the process gas into the pressure control panel..... | 24 |
| 8.3 | Regular maintenance work and cleaning | 25 |

9 Repair 26

9.1 General information on repair work..... 26

9.2 Troubleshooting and fault rectification 27

10 Decommissioning and recommissioning 28

10.1 Decommissioning..... 28

10.2 Recommissioning..... 28

11 Dismantling and disposal..... 29

11.1 General information on dismantling 29

11.2 Returns..... 29

11.3 Disposal 30

1 Introduction

This user manual is the original user manual for the Pressure control panel BT2000-2 from Spectron Gas Control Systems GmbH, referred to as Spectron.

The user manual is intended to facilitate correct and safe operation for the operating firm, and to warn against misuse. It is intended for the qualified personnel and the operator of the facility.



WARNING

Incorrect operation

Incorrect operation of the system, e.g. due to instruction errors, can lead to personal injury or damage to the system.

- a) Access to the user manual by the operating and maintenance personnel must be absolutely ensured at all times.
- b) A copy of the system documentation including the user manual must therefore be kept either on the system or in a suitable and accessible location.



NOTICE

Additional components

At the customer's request, this product can be equipped with additional components, which deviates from the standard described. This must be considered in all sections of this user manual!

This user manual contains information protected by copyright law. It must not be photocopied, reproduced, translated or copied onto data carriers, either in full or in part, without prior authorisation. Spectron retains all further rights.

2 Description

2.1 Intended use

The intended use of the Pressure control panel BT2000-2 is the expansion of a gas from a gas source and the distribution of the gas with adjustable outlet pressure.

Pressure control panels of type BT2000-2 are suitable for flammable gases, non-flammable gases, non-corrosive gases and for oxygen in technical gas quality.

The permissible gas types and pressure ranges are each specified on the label (see "Identification / label ► 5J").

The Pressure control panel is equipped with a process gas valve and an exhaust gas valve on each side.

The equipment versions of the Pressure control panels without electrical components may be used in an explosion hazard zone as they do not have separate ignition sources (ignition hazard assessment according to DIN EN ISO 80079-36).

Pressure control panels with electrical components that are suitable for use in an explosion hazard zone are marked on the label according to EU Directive 2014/34/EU.

To be able to use the Pressure control panels as intended, all persons working with them must comply with the specifications of the relevant user manual.

The area in which hazards can occur when used as intended is the area around the Pressure control panels. The danger zone changes depending on the system status and use.

2.2 Misuse

Any improper use constitutes misuse. Pressure control panels may only be used for the specified gases and in the specified pressure range. Pressure control panels with electrical components without marking according to EU Directive 2014/34/EU may not be used in an explosion hazard zone.

Furthermore, the following operating conditions are regarded as misuse:

- Use for gases in their liquid phase
- Failure to carry out inspection and maintenance work
- Pressurisation in reverse (opposite to the flow direction)
- Operation with gases that are not specified on the label
- Operation outside the permissible technical limit values
- Failure to heed and comply with any applicable legal regulations and other provisions
- Non-observance of the user manual
- Failure to heed the information on the label and in the product data sheet

2.3 Identification / label

The label is located on the mounting plate of the Pressure control panel.

The label provides the following details:

| Details | Example |
|---------------------|--------------------------|
| Project number | PROJECT |
| Article description | BT2000-2 -200-10-M-M-... |
| Inlet pressure P1 | 200 bar |
| Outlet pressure P2 | 10 bar |
| Gas type | GAS TYPE |

2.4 Environment

2.4.1 Temperatures

Normal temperatures expected in a production area are assumed when operating the system: -20°C to +60°C.

The air humidity must be below 60 % rel. humidity to prevent condensation. The operating temperature depends on the gas used.

2.4.2 Degree of cleanliness

Access to the system and to the escape and rescue routes must not be blocked.

The product should be kept clean (dust-free).

A suitable purge gas must be used, taking into account the quality and properties of the process gas.

Compressed air must be used for the control air at least class 5 according to ISO 8573-1.

2.4.3 Emissions

The A-rated sound pressure level does not exceed the value of 70 dB(A). It is not necessary to wear hearing protection.

The waste gas line or a burst disc line must not end in areas where the escaping process gas poses a hazard to persons or the environment.

Further emissions in the form of vibrations, radiation, vapours, dusts and waste water do not occur in the regular operation of the product.

2.5 Standards and laws

The design and construction of the Pressure control panel is subject to the following standards and directives:

| | |
|--------------------------------------|---------------------------------|
| 2006/42/EC | Machinery Directive |
| 2014/68/EU | Pressure Equipment Directive |
| 2014/34/EU | ATEX directives |
| DIN EN ISO 12100:2010 | Safety of Machinery |
| Safety data sheet for the gases used | Process gas and auxiliary media |

Various **additional** laws, regulations and guidelines must be complied with when handling pressurised gases. Find out about the laws, regulations and guidelines that apply in your location.

| | |
|--|--|
| BetrSichV | Betriebssicherheitsverordnung (Industrial health and safety ordinance) |
| ProdSG | Produktsicherheitsgesetz (Product Safety Law) |
| GefStoffV | Gefahrstoffverordnung (Hazardous Substances Ordinance) |
| TRGS 400, 407, 500, 720, 721, 722, 727, 745, 746 | Technische Regeln Betriebssicherheit (Technical Regulations on Operational Safety) |
| TRBS 1111, 2152, 3145, 3146 | Technische Regeln Betriebssicherheit (Technical Regulations on Operational Safety) |
| DGUV Regulation 1 | German Trade Association Principles of Prevention |
| DGUV Rule 113-001 | German Trade Association Rules on Explosion Protection |

EIGA documents

3 Safety

3.1 Basic information on the safety instructions

The product complies with the recognised technical regulations. Nevertheless, knowledge of the media used and their dangers as well as basic knowledge of the pressure control panel are prerequisites for safe and accident-free operation.

The user manual must be read and understood by every user. Instruction must be documented in writing.

The safety instructions are to be regarded as a supplement to the applicable accident prevention regulations and laws. Existing accident prevention regulations and laws must be observed in all cases.



NOTICE

Hazards from the operating environment of the system can lead to injuries to persons.

- a) No changes may be made to the system which result in a change in function.
- b) It is not possible to outline and cover in this manual all hazards arising from the environment or unforeseeable operating conditions of the system.

In the Safety Instructions chapter:

- Users are informed regarding hazards, residual risks and measures for risk reduction.
- The presentation of the safety instructions and the symbols is explained.
- Basic safety instructions to be observed in general are listed. Specific safety instructions are listed in the relevant chapters.



DANGER

DANGER indicates an imminent danger. If not avoided, death or extremely serious injuries will result.



WARNING

WARNING indicates a potential imminent danger. If not avoided, death or serious injury could result.



CAUTION

CAUTION indicates a potentially imminent danger. If not avoided, minor or moderate injury could result.



NOTICE

NOTICE indicates a potentially harmful situation. If not avoided, the system or property in its vicinity could be damaged.

3.2 Safety instructions

The safety instructions are to be observed by all persons working on the system. The rules and regulations for accident prevention applicable to the place of use are to be observed. The instruction of the operating and maintenance personnel on system safety must be documented.

Please pay special attention to this chapter to avoid accidents.

All measures and specifications in the safety data sheets must be implemented and observed.



DANGER

Gas leaks

If gas escapes on the product, contamination of persons, fires or explosions or the displacement of atmospheric oxygen can occur! Serious or fatal injuries are possible.

- a) Do not place pipelines and fittings under mechanical stress. Never use pipelines and components as climbing aid or to secure other parts!
- b) In the event of leaks, immediately secure the affected area!
- c) Smoking and naked flame are strictly prohibited!



DANGER

Intended use

Operation of the product with gases other than those specified or outside the limits may result in dangerous reactions in the system. Incorrect use poses considerable risks to operating personnel and the environment!

- a) Only use the product for gases for which it was designed.
- b) Only use the product in the specified limit values for pressure and withdrawal quantity.
- c) Usage for another type of gas or outside the limit values is prohibited and constitutes misuse.



DANGER

Defective product

A defect on the product can result in unforeseeable operating conditions. Persons may be injured.

- a) The product may only be operated in technically perfect condition in compliance with all chapters of the user manual.
- b) Environmental protection laws and safety regulations must be observed.



WARNING

Displacement of atmospheric oxygen

In the event of inert gas leaks, displacement of atmospheric oxygen may occur. Danger of suffocation!

- a) The operator must ensure adequate ventilation and airing in all rooms with gas installations and monitor the oxygen content.



⚠ WARNING

Repairs

If the product is not used as intended, unpredictable operating conditions may occur. Serious personal injuries are possible.

- a) Repairs may not lead to a change in function. The system may not be tampered with or modified.
- b) Before each repair, the system must be depressurised and flushed through.
- c) Repairs are only permitted to be carried out by trained persons.



⚠ WARNING

Incorrect operation

Incorrect operation of the system, e.g. due to instruction errors, can lead to personal injury or damage to the system.

- a) Access to the user manual by the operating and maintenance personnel must be absolutely ensured at all times.
- b) A copy of the system documentation including the user manual must therefore be kept either on the system or in a suitable and accessible location.



⚠ WARNING

Working on the product

If an accident occurs when working on the product, there is a considerable risk of injury.

- a) Never work on the product unattended or unannounced.
- b) Observe the site safety rules and permission procedure.



⚠ WARNING

Maintenance

Incorrect maintenance or maintenance work performed at the incorrect time can result in damage to the system or injury to persons.

- a) To avoid static charges, do not clean the product using dry cloths. Use damp cotton cloths.
- b) The maintenance intervals are to be specified by the system operator as part of its risk assessment.
- c) Observe the maintenance intervals and maintenance guidelines from the manufacturer and the applicable guidelines.
- d) Components may only be replaced by spare parts of the same design. The specifications of the component manufacturers must be complied with during installation.



⚠ CAUTION

Pressure relief lines

Discharge of hazardous media at the end of a pressure relief line or exhaust air line.

- a) Pressure relief lines may not end in areas where the escaping process gas poses a hazard to persons or the environment.
- b) The position of the pressure relief line must be carefully checked taking into account the material properties, main wind direction and other conditions.



NOTICE

Lighting

Incorrect switching actions or confusion can occur due to inadequate lighting.

- a) Ensure sufficient lighting in accordance with the statutory regulations.

3.3 Emergencies and safety devices

The operational local safety regulations of the system operator, such as the alarm plan, fire safety regulations and the escape and rescue plans, apply in all cases for the operation of the Pressure control panels .

When handling gases, all specifications from the safety data sheets must be followed. Local emergency services should be informed of the gases used at the site of the system.

In the event of mechanical damage, the product must be put into a safe operating condition.

Pressure regulators and pressure control panels are equipped as standard with an integrated relief valve to protect the armatures – except for variants with outlet pressures >100 bar. The user must ensure there is a suitable safety device installed downstream, if not already included with the equipment as standard.



NOTICE

The pressure relief valve or the burst disc are used to blow out gas that must be conveyed away via a non-permitted pressure rise.

They do not function as a safety valve for the entire gas supply system.



⚠ CAUTION

Overpressure in downstream armatures, pressure vessels and pipelines in the event of failure of the pressure regulator and its outlet pressure protection

To protect downstream armatures, pressure vessels and pipelines against excess pressure, a safety device corresponding to the operating firm's regulations must be installed.

3.4 Qualification of the operating and maintenance personnel

The intended user group is the system operator (user of the system) and the system maintenance personnel.

Every person working on the system must be familiar with the functions and dangers associated with the overall system. Instruction on the system is to be documented in writing.

Maintenance and repair work should only be carried out by specially trained personnel.

All operators, as well as personnel who regularly enter the area, must be trained on a minimum of the following topics:

- Alarm rules at the site and conduct in the event of malfunctions and leaks
- Basic functions of the product
- User manual
- System documentation incl. manufacturer documentation
- Position of the safety devices

- Safety data sheets on the process gas used
- Personal protective equipment

In addition, operators must have the requisite physical and mental skills to operate and maintain the equipment.

Persons who do not meet this requirement (e.g. visitors), must not remain alone in the overall system.

Operating personnel must use appropriate personal protective equipment for the activities to be performed and the associated environmental hazards. The operational instructions and the specifications of the employers' liability insurance associations and the safety data sheets must be complied with.

4 Design and function

4.1 Design

Illustration of the pressure control panel with gas cylinder connected

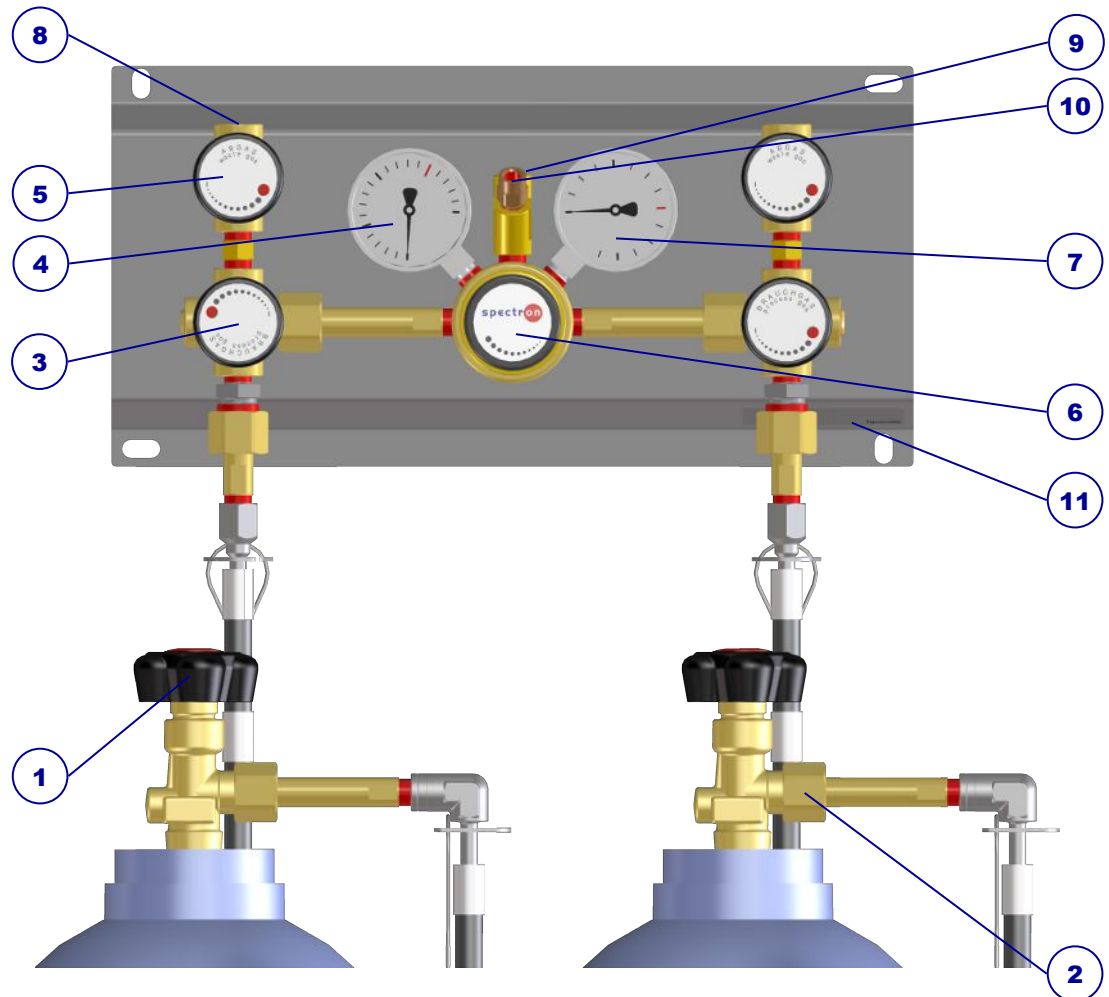


Illustration 1: Pressure control panel design BT2000-2

| Item | Description | Short name | Connection |
|------|--|------------|---------------------------------|
| 1 | Process gas source valve | | |
| 2 | Cylinder connection incl. plug | | Cylinder connection (see label) |
| 3 | High-pressure process gas shut-off valve | HPI | |
| 4 | Pre-pressure gauge | PG P1 | |
| 5 | High-pressure waste gas valve | HPV | |
| 6 | Pressure regulator | PR | |
| 7 | Outlet pressure gauge | PG P2 | |
| 8 | Waste gas connection | | ¼"-NPT female |
| 9 | Process gas connection | | ¼"-NPT female |

| | | |
|----|--|-----------------|
| 10 | Waste gas connection (pressure relief valve) | 1/8"-NPT female |
| 11 | Label | |

4.2 Functional description

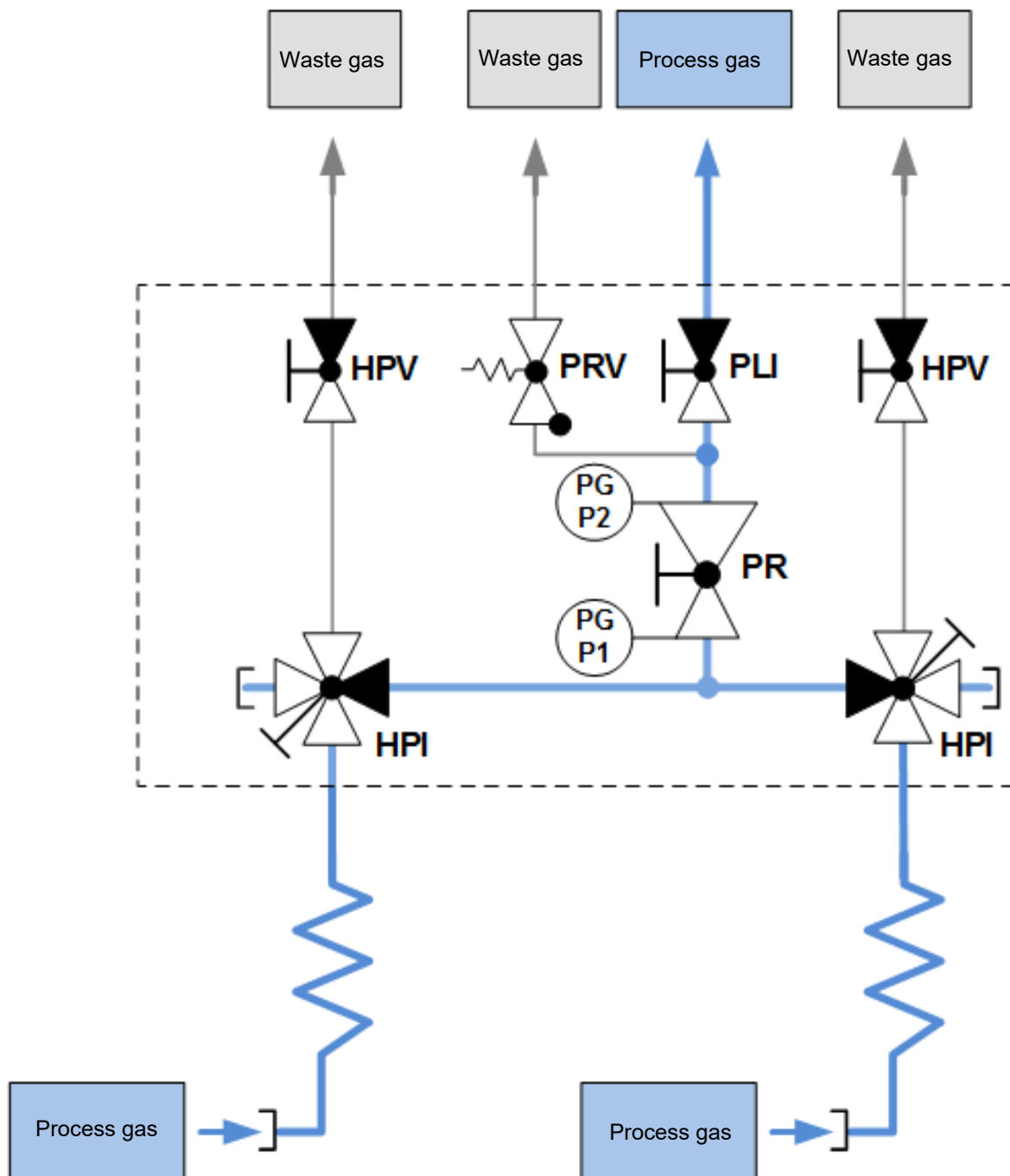


Illustration 2: P&ID BT2000-2

The intended use of the Pressure control panel BT2000-2 is the expansion of a gas from a gas source and the distribution of the gas with adjustable outlet pressure.

With the two-sided version, the user can open and close the HPI valves on each side depending on which side is to supply the gas and which is to be the reserve side (manual switching panel).

4.3 Technical data



NOTICE

The technical data can be taken from the data sheet for the relevant product. If this is not available, you can view and download it at www.spectron.de.

The maximum input and output pressures and the gas type are given on the identification or label.

4.4 Boundaries and interfaces

The scope of supply includes the product as described in the "Design [► 13]" chapter. The transfer points to process gas, exhaust air and auxiliary media (incl. power supply) are the connections on the pressure control panel or product.

The following areas and functions have not been included in the scope of supply from Spectron:

- other systems, lines and installations of the overall system
- Process gas source
- Exhaust air (this applies in particular to foreseeable problems, e.g. failure of the exhaust air system)
- Supply of auxiliary media (compressed air, purge gas)
- Power supply
- Lighting
- Controller

5 Installation

5.1 General information



⚠ CAUTION

Injury or damage in the event of incorrect assembly or disassembly

Special steps are required for assembly and disassembly work on the product. Personal injuries and damage to the product are possible.

- a) Assembly and disassembly work may only be carried out by the installation engineer or appropriately skilled specialist companies and persons.
- b) The product is not permitted to be re-used following disassembly. All components must be disposed correctly.

Depending on the type of gas, different requirements apply to the installation space of gas supply systems. It is essential to observe the legal regulations and trade association regulations, and the information in the safety data sheets.

Familiarise yourself with the necessary work steps (see "Installation work [▶ 16]") and prepare the necessary tools.

See also

📖 Functional description [▶ 14]

5.2 Installation work

5.2.1 Installation

The Pressure control panel can be fastened in a gas cylinder cabinet or to the room wall directly with screws or using C-mounting rails.

5.2.2 Connecting the incoming and outgoing lines

All lines must be connected in accordance with the applicable standards and specifications and tested with purge gas (pressure test and leak test). The specifications on dimensioning of the connections are described in the "Design [▶ 13]" chapter.

1. Connect the exhaust gas outputs of the Pressure control panel to the exhaust gas lines.
2. Connect the process gas output of the Pressure control panel to the process.

5.3 Checking the system

Before beginning the test, ensure that the controller (if present) is ready for operation and is in manual mode.

5.3.1 Pressure test with purge gas

For pressure testing the Pressure control panel BT2000-2, inert gas (non-reactive) gas is used (connect to HPI). Ensure that the required pressure is present and there is a valve present for shutting off the purge gas (PGI).

If no process gas shut-off valve PLI is present in the outlet of the pressure control panel, the complete line network is tested to the consumer and then purged. This must be carried out via an exhaust gas valve on the consumer. To do this, refer to the system documentation for the consumer.

1. Close all valves and fully depressurise the pressure regulator by turning the handwheel anti-clockwise as far as it will go.
2. Open valves PGI and HPI to build up pressure in the system.
3. Slowly open the pressure regulator and build up pressure.
4. Wait until the pressure has been built up and close the PGI valve.
5. Check whether the displays on PG P1 and PG P2 are identical. If both pressure gauges show the same pressure, release the pressure on the pressure regulator. If the values do not match, check the pressure regulator setting and readjust if necessary.
6. Leave the pressure for 10 minutes.
7. After 10 minutes have elapsed, check that the values on PG P1 and PG P2 still match and whether the pressure has remained constant.
8. If there is no change, release the pressure control panel via valve HPV and close all valves.

If the pressure has reduced, perform a leak test to check where the gas is escaping, repair the connection and repeat the pressure test. The line network can then be purged clear up to the consumer.

6 Commissioning

6.1 Preparations for commissioning

The commissioning of the pressure control panel may only be carried out after the integration into the inventory has been completed. Commissioning is not permitted until the incomplete machine has been installed into a complete machine and this corresponds to the provisions of the EU Machinery Directive and the EC Declaration of Conformity according to appendix II A.

Before putting the equipment into operation for the first time, the entire pressure control panel must be purged via the PLI valve right up to the process. It is imperative to adhere to the direction of the gas flow when doing this. You must not purge counter to the usual direction of flow (from the tapping point to the pressure control panel), since this can flush debris resulting from the installation work, for example, back into the pressure regulator (PR).

The connecting threads and connecting surfaces of the gas source valves as well as the sealing rings must be checked to ensure that they are in perfect condition.

Always turn shut-off valves as far as the stop when opening or closing them.

Valves and ball valves must always be moved slowly and by no means abruptly.

Make sure that:

- the fittings are marked for the corresponding gas type,
- all protective caps have been removed,
- the assembly has been correctly carried out and a pressure test has been performed,
- all ball valves and valves are closed (the red marking is visible in the handwheel window) and
- the pressure regulator has been depressurised (if possible),
- the on-site exhaust gas system (if present) is functional at all times and is in operation,
- all shut-off armatures are checked for loose connections and
- the controller (if fitted) is in operation.

6.2 Procedure for commissioning

6.2.1 Connecting the process gas source

Connect the hoses. Proceed as described in the instruction manual for the respective hose.

1. Place the process gas source in front of the bracket and secure with the safety chain.
2. Remove and retain the protective cap and sealing nut on the process gas source.
3. Remove the plug from the gas connection.
4. Check connection thread and sealing. A new sealing must be used for each gas source exchange.
5. Screw the gas connection onto the gas source valve by hand and tighten it gas-tight with a spanner.
6. Carry out flushing and tightness test as pressure or leak test. The HPI remains closed in this process (see "Exchanging the process gas source [▶ 21]").

6.2.2 Flushing in the process gas to the process

Flushing in the entire line network to the process must be implemented via a waste gas valve on the process. To do this, refer to the system documentation for the process. This procedure does not apply to gases that require passivation.

1. Close all valves and fully depressurise the pressure regulator by turning the handwheel anti-clockwise as far as it will go.
2. Open the process gas source valve and then the HPI and PLI valves to fill the entire area in which the process gas is to penetrate up to the process and fill it (pressure build-up).
3. First slowly set the pressure regulator step by step to a low outlet pressure.
The process source pressure and the gas type properties are to be taken into account here.
4. Open the shut-off valve on the process. Ensure that the process gas can be discharged safely via the process.

The pressure control panel is now in a condition ready for operation.

If operation is not to be continued following the flushing process, the pressure regulator must be fully depressurised. This is carried out by turning the handwheel anti-clockwise as far as it will go.

When system operation is then started, set the pressure regulator step by step to the required outlet pressure.

7 Operation

7.1 General information on operation

During regular operation, the system will be in supply mode.

The procedure for decommissioning and recommissioning for extended system standstills is described in the "Decommissioning and recommissioning [► 28]" chapter.

With a Pressure control panel with manual switchover, the HPI valves can be used to define which side is to supply the pressure regulator with gas. The HPI valve must be opened on this side. The other side is the reserve side. The HPI valve remains closed here.

If the reserve side is to become the supply side, the process gas source valve and HPI valve must first be closed on the supply side. The process gas source valve and the HPI valve on the reserve side are then slowly opened so that the reserve side can take over the supply. For the remaining procedure, see: "Exchanging the process gas source [► 21]"

7.2 Gas supply interruption

7.2.1 Interruptions to operation for less than 48 hours

For short interruptions to operation (less than 48 hours), the valve on the process gas source and valve PLI or a valve on the consumer can be closed. No other shut-off and safety measures are required.

The valve PLI may only be opened after the interruption if the indicated outlet pressure is not greater than the specified maximum outlet pressure.

7.2.2 Interruptions to operation for more than 48 hours

For longer interruptions to operation (over 48 hours), the following steps must be carried out:

1. Close all valves and fully depressurise the pressure regulator by turning the handwheel anti-clockwise as far as it will go.
2. Open valve HPV to reduce the pressure.
3. Close valve HPV.

7.2.3 Putting the control panel into a safe condition

In the event of interruptions in operation for more than 5 days or pending maintenance or servicing, the Pressure control panel must be put into a safe condition. First carry out the steps "Interruptions to operation for more than 48 hours [► 20]".

The process gas source must be connected during flushing (see "Connecting the process gas source [► 18]"). Also observe the "Preparations for commissioning [► 18]" chapter.

To ensure high gas purity, pressure purging is to be performed as described below.

7.3 Exchanging the process gas source



NOTICE

Penetration of ambient air into the system

Each time you change the cylinder, ambient air gets into the connecting parts of the system. To prevent the gas and the entire system from being contaminated, the connection must be purged before gas is drawn from the cylinder again. In the case of non-toxic, non-corrosive gases, this can be done by means of multiple pressure purges with process gas. In the case of corrosive or toxic gases or gases that are hazardous in some other way, purging must be carried out with inert gas.



WARNING

Gas source exchange

If a gas source exchange is performed incorrectly, gas leakage and poisoning of persons may occur.

- a) The gas source exchange are to be carried out by trained specialist personnel and never unattended.
- b) A pressure test must be conducted after each gas source exchange.
- c) For each gas source exchange, a new seal suitable for the used gas is to be used.
- d) Wear the personal protective equipment prescribed in the risk assessment.

With each exchange of the gas source, check the connection for leaks. We strongly recommend replacing the sealing every time the gas source is exchanged. Always turn the shut-off valves slowly and as far as the stop when opening or closing them!

Removing the empty process gas source:

1. Close the process gas source valve.
2. Close valve HPI.
3. Open valve HPV to reduce the pressure.
4. Close valve HPV.
5. Disconnect the process gas source connection.
6. Mount the sealing nut on the gas source valve and protective cap on the process gas source.
7. Identify, secure and remove the empty process gas source.

Connecting the new process gas source:

8. Provide new process gas source, position in front of the bracket and secure using the safety chain.
9. Remove and retain the protective cap and screw plug.
10. Check the port thread and sealing; a new sealing must be used each time the gas source is exchanged.
11. Screw the process gas connection onto the gas source valve by hand and tighten it gastight with a spanner.
12. Open the process gas source valve, build up pressure, and close it again. Check using leak test spray whether the process gas port is leak-tight.
13. Open valve HPV to reduce the pressure.
14. Close valve HPV.
15. Open the process gas source valve to build up the pressure with purge gas (process gas).
16. Wait until the pressure has been built up and close the process gas source valve again.
17. Open valve HPV to build up the pressure and then close it again.
Repeat steps 8 to 10 depending on the gas type at least 10 times.
18. Open the gas source valve to fill the gas connection with process gas.
19. Close the process gas source valve.
20. Open valve HPI. In the case of a two-sided Pressure control panel with manual switchover, keep the HPI valve closed, and do not open it until the supply side has to be changed again.
21. Slowly open the gas source valve.

The Pressure control panel is ready for supply.

8 Maintenance, cleaning and repairs

8.1 General information on maintenance



⚠ WARNING

Noise emission

When working on pressurised pneumatic supply, significant noise emission can occur. Acute and chronic loss of hearing may result.

- a) Never perform work on the pressurised pneumatic supply without hearing protection.
- b) Only replace the silencers when the supply is unpressurised.



⚠ WARNING

Incorrect operation

Incorrect operation of the system, e.g. due to instruction errors, can lead to personal injury or damage to the system.

- a) Access to the user manual by the operating and maintenance personnel must be absolutely ensured at all times.
- b) A copy of the system documentation including the user manual must therefore be kept either on the system or in a suitable and accessible location.



⚠ WARNING

Working on the product

If an accident occurs when working on the product, there is a considerable risk of injury.

- a) Never work on the product unattended or unannounced.
- b) Observe the site safety rules and permission procedure.



⚠ WARNING

Maintenance

Incorrect maintenance or maintenance work performed at the incorrect time can result in damage to the system or injury to persons.

- a) To avoid static charges, do not clean the product using dry cloths. Use damp cotton cloths.
- b) The maintenance intervals are to be specified by the system operator as part of its risk assessment.
- c) Observe the maintenance intervals and maintenance guidelines from the manufacturer and the applicable guidelines.
- d) Components may only be replaced by spare parts of the same design. The specifications of the component manufacturers must be complied with during installation.



⚠ CAUTION

Injury or damage in the event of incorrect assembly or disassembly

Special steps are required for assembly and disassembly work on the product. Personal injuries and damage to the product are possible.

- a) Assembly and disassembly work may only be carried out by the installation engineer or appropriately skilled specialist companies and persons.
- b) The product is not permitted to be re-used following disassembly. All components must be disposed correctly.



NOTICE

Lighting

Incorrect switching actions or confusion can occur due to inadequate lighting.

- a) Ensure sufficient lighting in accordance with the statutory regulations.

Correctly performed and timely maintenance increases the service life, ensures availability and helps to avoid undesirable downtimes. Depending on the gas type, the components are subject to different maintenance intervals. Observe the stipulations from the applicable directives.

Servicing and maintenance measures are only permitted to be carried out by competent specialist companies and persons.

Maintenance work should be documented by the operator. The documentation should indicate who carried out which work and when (proof of maintenance).

It is only permitted to use original spare parts or equivalent spare parts as well as suitable tools:

- The recommended maintenance and test intervals are to be observed! (Also observe the manufacturer's documents)
- The causes of possible defects are to be investigated, e.g. damage, unusual noises, overheating etc.

Before beginning maintenance work, the pressure control panel must be flushed (see "Interruptions to operation for more than 48 hours [► 20]"). After completing the work, a re-commissioning process must be carried out (see "Commissioning [► 18]").

See also

- 📖 Commissioning [► 18]
- 📖 Interruptions to operation for more than 48 hours [► 20]

8.2 Flushing the process gas into the pressure control panel

1. Close all valves and fully depressurise the pressure regulator by turning the of the hand-wheel anticlockwise as far as it will go.
2. Open the process gas source valve and then the HPI valve, so to fill the entire area in which the process gas is to penetrate (pressure build-up).
3. Now open valve PLI.
4. Slowly set the pressure regulator to the required outlet pressure.

In this process, the process source pressure and the gas type properties are to be taken into account.

The pressure control panel is now in a condition ready for operation.

If operation is not to be continued following the flushing process, proceed in accordance with "Gas supply interruption [► 20]".

8.3 Regular maintenance work and cleaning

For components in which the tests reveal wear or even malfunctions, repairs or component replacement must be carried out by competent specialist companies and persons.

| Components | Test | Interval |
|------------|--|---|
| Filter | Replace filter | Replacement with insufficient flow rate |
| All | Visual inspection for corrosion, damage and correct fastening Functional test Leakage test | At least annually and before each commissioning process |
| Earthing | Visual inspection for damage and correct fastening | At least annually |

The product should be cleaned on a regular basis. Heavy soiling can lead to malfunctions.

Only clean the product as necessary using a damp, lint-free and clean cloth, without cleaning agent.

9 Repair

9.1 General information on repair work



⚠ WARNING

Noise emission

When working on pressurised pneumatic supply, significant noise emission can occur. Acute and chronic loss of hearing may result.

- a) Never perform work on the pressurised pneumatic supply without hearing protection.
- b) Only replace the silencers when the supply is unpressurised.



⚠ WARNING

Incorrect operation

Incorrect operation of the system, e.g. due to instruction errors, can lead to personal injury or damage to the system.

- a) Access to the user manual by the operating and maintenance personnel must be absolutely ensured at all times.
- b) A copy of the system documentation including the user manual must therefore be kept either on the system or in a suitable and accessible location.



⚠ WARNING

Working on the product

If an accident occurs when working on the product, there is a considerable risk of injury.

- a) Never work on the product unattended or unannounced.
- b) Observe the site safety rules and permission procedure.



⚠ CAUTION

Injury or damage in the event of incorrect assembly or disassembly

Special steps are required for assembly and disassembly work on the product. Personal injuries and damage to the product are possible.

- a) Assembly and disassembly work may only be carried out by the installation engineer or appropriately skilled specialist companies and persons.
- b) The product is not permitted to be re-used following disassembly. All components must be disposed correctly.



NOTICE

Lighting

Incorrect switching actions or confusion can occur due to inadequate lighting.

- a) Ensure sufficient lighting in accordance with the statutory regulations.

The objectives of the repair are:

- Detect and assess the causes of the malfunction
- Rectify faults and restore operational readiness

Repairs to the product may only be performed by the manufacturer or specialist personnel instructed on the system.

Work on electrical system parts may only be performed by a qualified electrician.

Before beginning work, the pressure control panel must be purged (see "Flushing through to the process"). After completing the work, a re-commissioning process must be carried out (see "Commissioning [► 18]").

See also

 Commissioning [► 18]

9.2 Troubleshooting and fault rectification

| Fault | Possible cause | Remedy |
|---|--|---|
| Outlet pressure too low | Process gas source empty | Check inlet pressure on the pressure regulator and change the process gas source if necessary |
| Vibration noises in the pressure regulator | Pressure regulator faulty | Replace pressure regulator |
| Pressure regulator frozen | Flow rate too high | Reduce flow rate or use gas preheater if possible |
| System pressure cannot be set to the desired value | Pressure regulator faulty | Replace pressure regulator |
| | System pressure outside the intended system pressure | Only operate the system at the intended range |
| Flow insufficient or fluctuating | Inlet pressure of the process gas too low | Increase inlet pressure |
| | Valve faulty | Replace faulty valve |
| | Filter loaded | Change filter |
| Relief valve, over-pressure valve, safety valve or burst disc are discharging gas | Impermissible pressure rise in the outlet pressure range | Close all valves and check pressure control panel |
| HPI valve cannot be opened or closed | Pneumatic pressure too low | Check pneumatic pressure |
| | Compressed air hose ripped | Replace compressed air hose out |
| Leak | Connection leaking | Flush pressure control panel clear and perform pressure test and leak test |

10 Decommissioning and recommissioning

10.1 Decommissioning

The gas supply via the Pressure control panel can be interrupted without additional risks. No special maintenance or preservation work is required during this time.

If the Pressure control panel remains unused or disassembled for an extended period, a decommissioning process must be carried out. In principle, decommissioning must be carried out in the following order:

1. Interrupt gas supply (see "Gas supply interruption [► 20]").
2. Disconnect the process gas source from the Pressure control panel .
3. Seal all open screw connections tightly (e.g. plug on process gas port).
4. Flushing through to the process (see "Flushing through to the process").
5. Close all valves.
6. Switch off controller.

10.2 Recommissioning

Recommissioning of the Pressure control panel must be carried out in accordance with the stipulations in the "Commissioning [► 18]" chapter.

11 Dismantling and disposal

11.1 General information on dismantling



⚠ WARNING

Noise emission

When working on pressurised pneumatic supply, significant noise emission can occur. Acute and chronic loss of hearing may result.

- a) Never perform work on the pressurised pneumatic supply without hearing protection.
- b) Only replace the silencers when the supply is unpressurised.



⚠ CAUTION

Injury or damage in the event of incorrect assembly or disassembly

Special steps are required for assembly and disassembly work on the product. Personal injuries and damage to the product are possible.

- a) Assembly and disassembly work may only be carried out by the installation engineer or appropriately skilled specialist companies and persons.
- b) The product is not permitted to be re-used following disassembly. All components must be disposed correctly.



NOTICE

Lighting

Incorrect switching actions or confusion can occur due to inadequate lighting.

- a) Ensure sufficient lighting in accordance with the statutory regulations.

Before dismantling and disposal of the product, it must be taken out of operation and purged. The product must then be disconnected from the auxiliary media supply.

The dismantling process is to be carried out in the following order:

1. Purging of the product and decommissioning.
2. Disconnect the product from the gas supply system.
3. Disconnect the product from the process.
4. Remove the product – to do so, please refer to the "Installation [▶ 16]" chapter.
5. Seal all ports on the product.
6. Pack the product.

11.2 Returns

If products are returned to Spectron for checking, maintenance or repair, it is essential to purge them with inert gas. A check can only be undertaken by Spectron if the repair pre-registration including the decontamination declaration has been duly completed.

11.3 Disposal

Dismantling and disposal must be carried out in accordance with the official and legal requirements at the site of the system. The operator must produce a risk assessment and work instructions before dismantling. A piece of equipment may only be disposed of when the decontamination declaration has been provided, completed in full.



Gas control on a high level

spectron
Gas Control Systems

Spectron Gas Control Systems GmbH
Monzastr. 2c
D-63225 Langen
Tel: +49 (0)6103 9424-050
Fax: +49 (0)6103 9424-072
info@spectron.de
www.spectron.de