



Tapping point

EU13-BV-40-2,5-M-M-G1/2

Product features

- Tapping point with ball valve, diaphragm pressure regulator and wall bracket
- For non-corrosive industrial gases
- Single-stage with high control accuracy
- Central filter in the pressure regulator
- Safety pressure gauge acc. to DIN ISO 5171
- Pressure regulator with integrated relief valve

Attention:

For the pressure regulator U13 special outlet fittings with orifice holes have to be used to ensure a correct function of the regulator.

see: data sheet "Fittings"

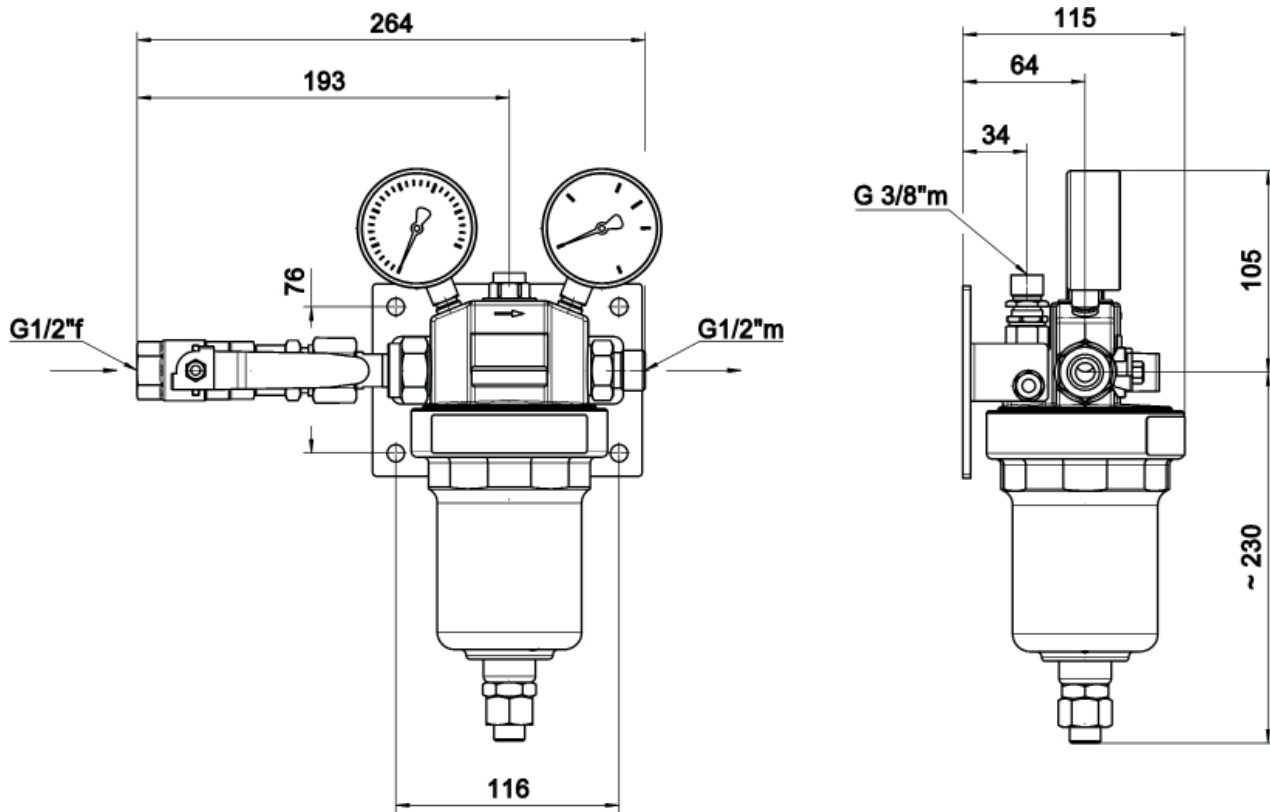
Technical data

Type	single-stage
Flow rate Q	max. 200 m ³ /h
Inlet pressure P₁	max. 40 bar
Outlet pressure P₂	max. 2,5 / 4 / 10 bar
Materials	
Body:	brass
Bonnet:	Alu, powder coated
Valve seat:	PA
Diaphragm:	NBR
In- and outlets	
Inlet:	G 1/2" female
Outlet:	G 1/2" male
Pressure gauge ports:	G 1/4" female
Outlet relief valve:	G 3/8" male
Temperature range	-20°C to +60°C
Leak rate	≤10 ⁻⁴ mbar l/s He
Weight	ca. 5,3 kg

Performance factors and outlet pressures to find the flow rates of the tapping points EU13

EU13 series		max. P ₂ : 1,5 ... 4 bar	max. P ₂ : 5 ... 10
Type		P	P
Performance factor for P ₁ = 40 bar	L ₅ (5% pressure drop)	4	4,5
	L ₁₀ (10% pressure drop)	5,5	6
	L _{max}	7	7,5
Outlet pressure variations [%] relating to inlet pressure variation		1	1,25

Dimensions and connections



Ordering information: Tapping point EU13

EU13 - BV - 40 - 10 - M - M - G1/2 - NFG

Inlet pressure P_1

40 max. 40 bar

Outlet pressure P_2

2,5 max. 2,5 bar

4 max. 4 bar

10 max. 10 bar

Type of gas

NFG non flammable gases

FG flammable gases

O2 oxygen