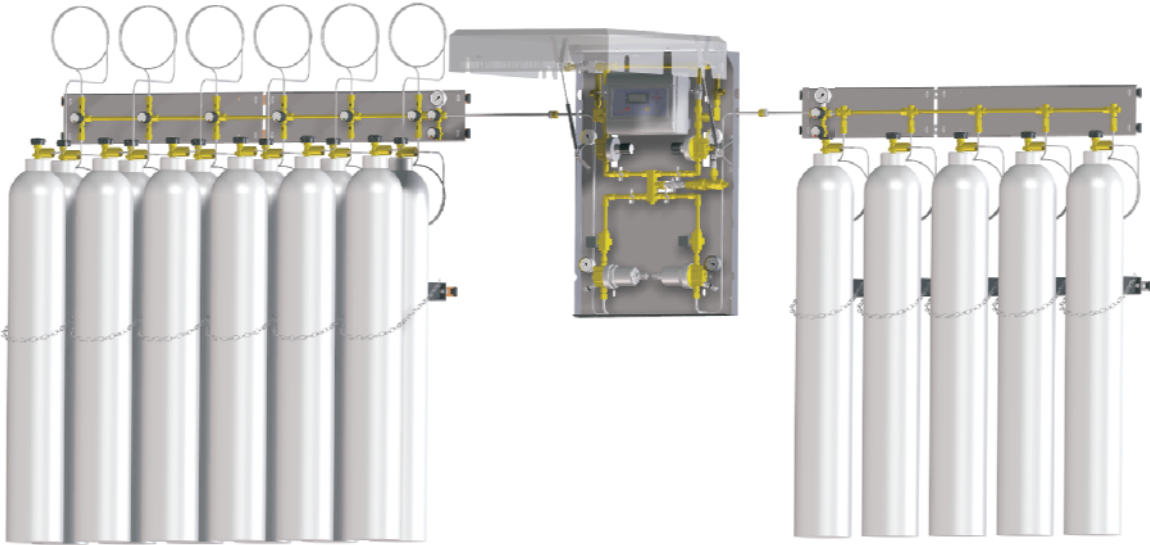


Spectromed



**Gas supply systems
for hospitals**

Product features

Change-over-panel MED

- Central gas supply system with automatic change-over function for hospitals
- For operation with a cryogenic tank and up to 2 batteries of gas cylinders
- Including connections for 2 manifolds for gas cylinders
- Designed for oxygen, compressed air, synthetic air, nitrous oxide, carbon dioxide or nitrogen
- For flow rates up to 25 or 100 m³/h
- Suitable for gas cylinder pressure (emergency supply) up to 300 bar
- Pressure regulators with high control accuracy
- Dual stage pressure reduction
- Safety pressure gauge according to DIN EN 562
- 2 safety relief valves to protect the main line
- Redundant system
- According to ISO 7396-1 and 10524-2
- CE 0297

Control system FLO

- Flomed-control system for solenoid valves (FLOMED P) with operation mode display of each gas source and line pressure monitoring
- Floalarm D10-alarm system for digital signals (e.g. contact pressure gauges)
- Floalarm A5-alarm system for analog signals (e.g. pressure transducer)
- Differentiation between middle and high alarm
- Potential free output for signal transmission

Manifold system MBS

- Manifold system for 2-6 gas cylinders next to each other and 2 cylinders in a double row including mounting rails
- Cylinder brackets, check valve and / or shut-off valve for each cylinder

Flexible connection MSU

- Flexible connections with pigtailed or stainless steel corrugated hoses for 200 or 300 bar and all international cylinder connections

Technical data

Inlet pressure P₁ max. 300 bar

Outlet pressure P₂ max. 6 bar

Flow rate max. 25 or 100 m³/h

Materials

Piping: brass
Pipes to battery system: stainless steel
Pressure regulators: brass

Connections and ports

Cryo tank: 1" brazing stub
Cylinder batteries: G 1/2" bull nose
Outlet: G 3/4" union nut
Pressure gauges: G 1/4" female
Outlet relief valves: G 3/8" bull nose
Safety valve: G 3/4" male and G 1/2" female

Waste gas cylinder batteries: G 1/4" female

Temperature range -30°C to +60°C

Leak rates <10⁻³ mbar l/s He

Weights

Panel MED 100 62 kg
Panel MED 25 40 kg
Battery system approx. 6 kg
Flexible connection approx. 0.5 kg

Control system FLOMED

Power supply 230 V AC
Pressure transducer 4-20 mA
4-line LCD-display 20 digits per line
Alarm signals: acc. ISO 7396-1
6 potential free outputs
1 collecting alarm
Languages: English, German, Italian

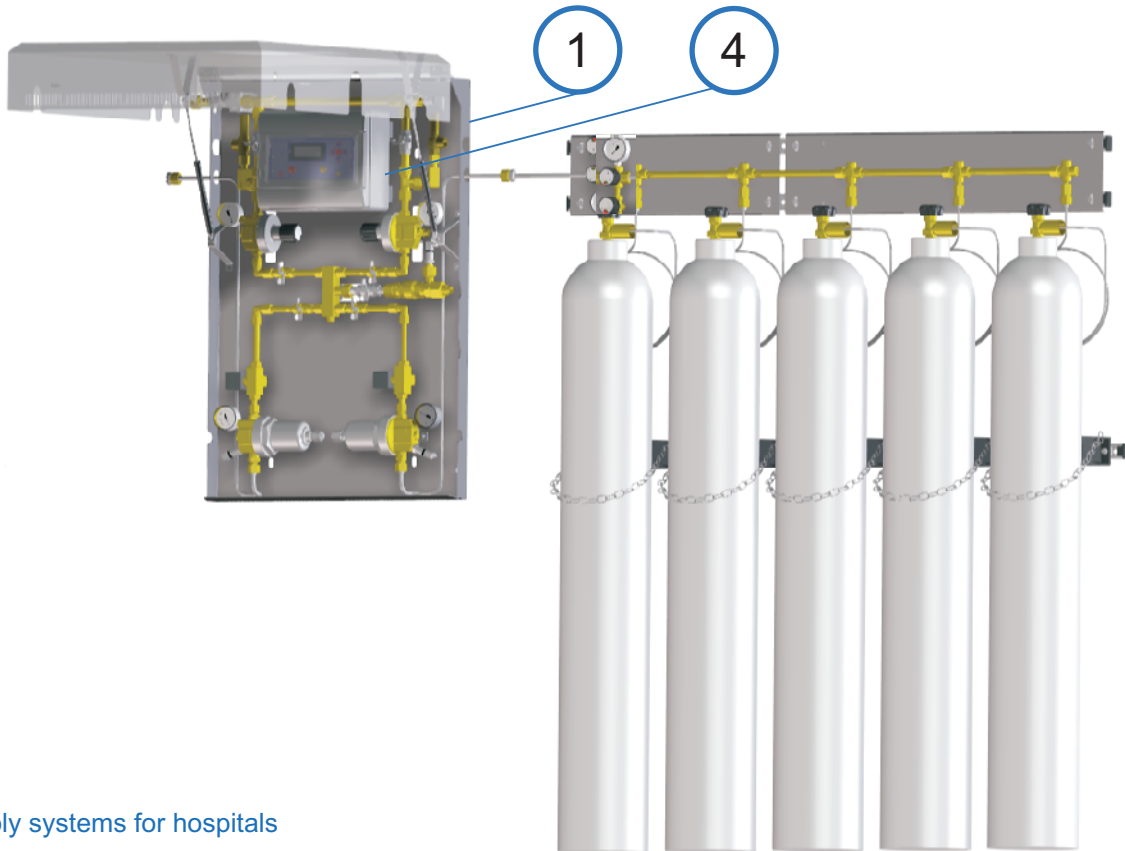
Control system FLOALARM D10

Power supply 230 V AC
Contact pressure gauge NC
2-line LCD-display 20 digits per line
Alarm signals: acc. ISO 7396-1
1 potential free output
1 collecting alarm
Languages: English, German, Italian

Control system FLOALARM A5

Power supply 230 V AC
Pressure transducer 4-20 mA
2-line LCD-display 20 digits per line
Alarm signals: acc. ISO 7396-1
1 potential free output
1 collecting alarm
Languages: English, German, Italian

Changer-over panel MED



Gas supply systems for hospitals

Ordering information: Panel MED

MED - 100 - 2U - M - CA

1

Capacity

25 - up to 25 m³/h
100 - up to 100 m³/h

Pressure control

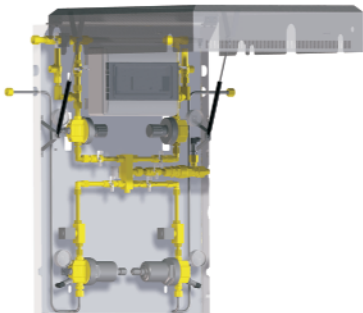
CA - cabinet (for FLOMED P)
PL - plate (for FLOALARM)

Type

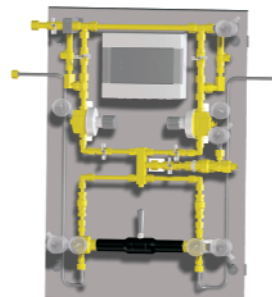
2U - automatic change-over with differential pressure
V - automatic change-over with solenoid valves (NO)

Pressure gauge

M - pressure gauge
K - contact pressure gauge
D - pressure transducer

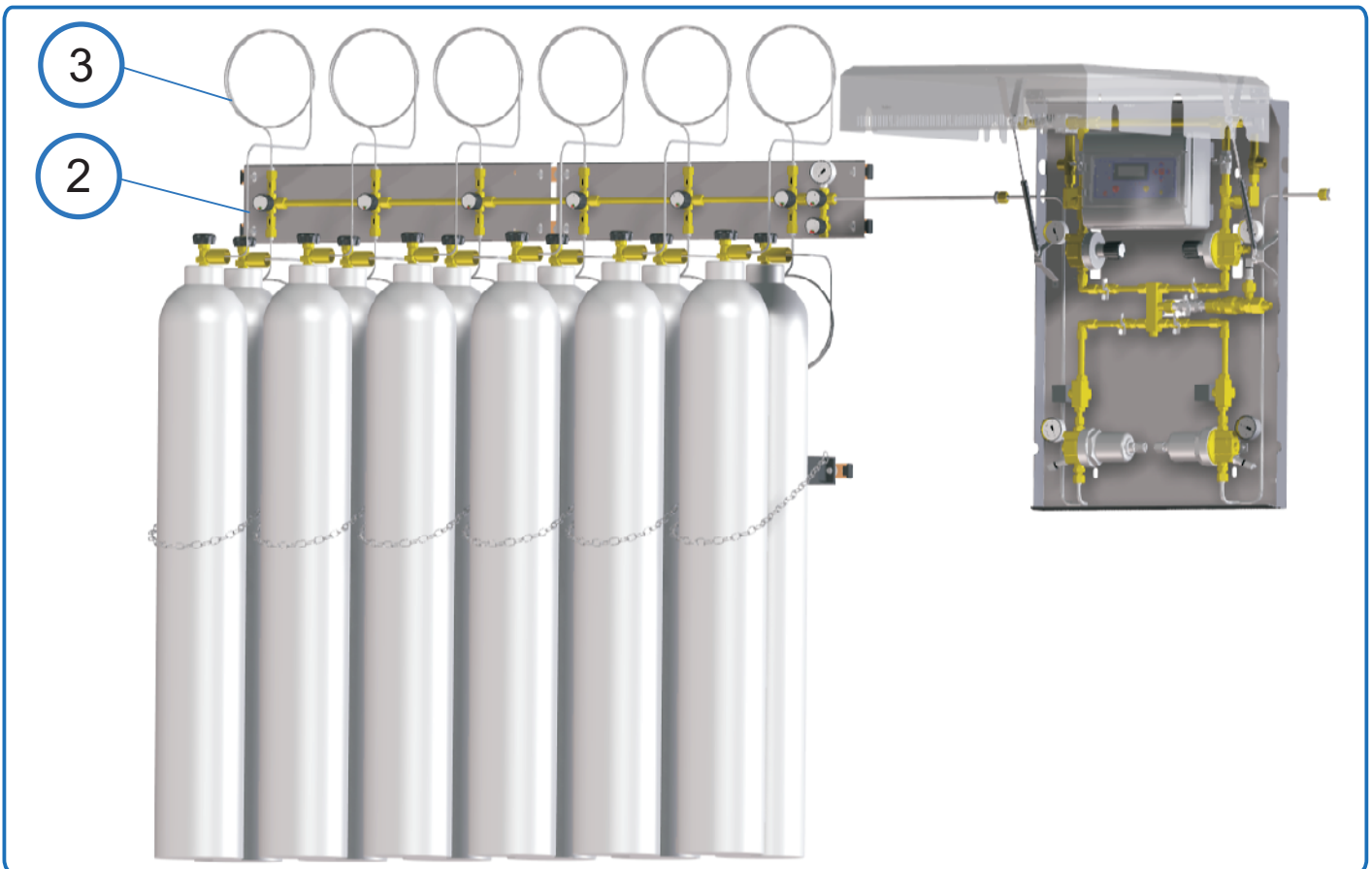


V - automatic change-over with solenoid valves
CA - cabinet



2U - automatic change-over with differential pressure
PL - plate

Manifold system MBS



Ordering information:
Manifold system MBS

MBS - L - 5 - 1 - VR25 - AV - RV - FH

2

Side

L - left
R - right

Cylinder manifolds

2 - for 2 gas cylinders in line
3 - for 3 gas cylinders in line
4 - for 4 gas cylinders in line
5 - for 5 gas cylinders in line
6 - for 6 gas cylinders in line

Rows per manifold

1 - single
2 - double

* You have to choose at least a check valve or shut-off valve

Cylinder brackets

FH - with cylinder brackets
0 - without cylinder brackets

Check valve*

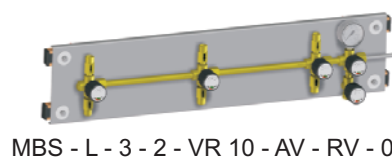
RV - with check valve
0 - without check valve

Shut-off valve*

AV - Shut-off valve for each cylinder
0 - without shut-off valve

Extension

VR 10 - 10 cm
VR 25 - 20 cm
VR 50 - 50 cm
VR 100 - 100 cm
0 - without extension



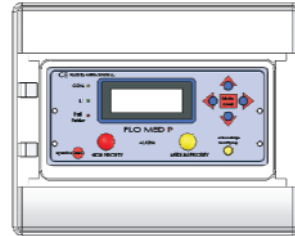
MBS - L - 3 - 2 - VR 10 - AV - RV - 0

Ordering information:
Control system FLO

4

FLOMED P

Control system with 10 digital and 4 analog inputs for contact pressure gauges and pressure transmitters



FLOALARM A5

Alarm system with 5 analog inputs for e.g. pressure transmitters



FLOALARM D10

Alarm system with 10 digital inputs for e.g. contact pressure gauges

Ordering information:
Flexible connection

3

MSU - 300 - DIN 477-5 no. 59 - O2

Connection

MSO - pigtail - top version
MSU - pigtail - bottom version
MFS - stainless steel corrugated hose (1m)

Type of gas

O2 - oxygen
DL - compressed air
SL - synthetic air
N2O - nitrous oxide
CO2 - carbon dioxide

Inlet pressure P₁

200 - max. 200 bar
300 - max. 300 bar

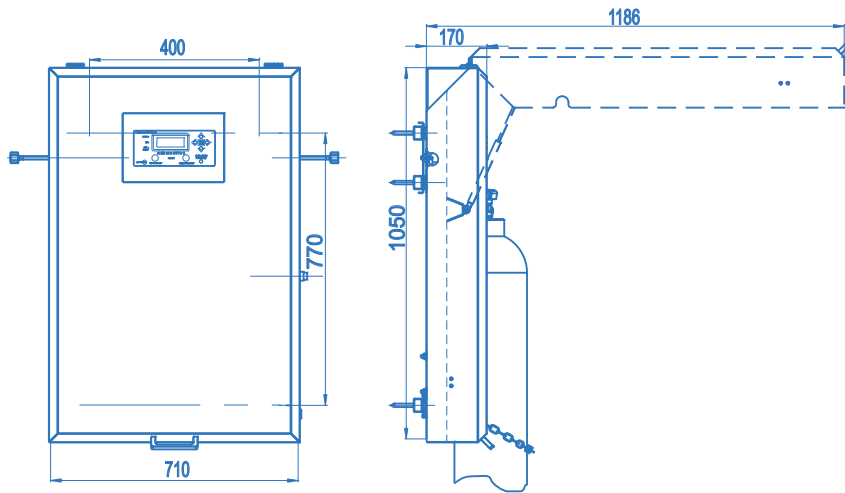
Cylinder connection

Detailed specification of cylinder connection including the relevant standard and number (e.g. DIN 477-5 no. 59 for oxygen up to 300 bar)

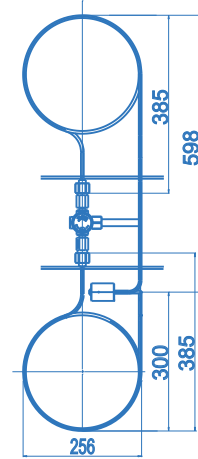
MSO - pigtail - top version
MSU - pigtail - bottom version



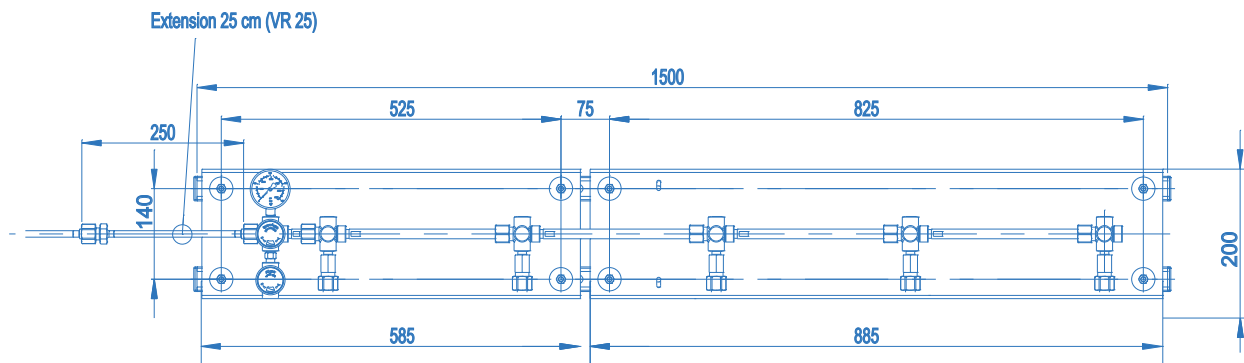
Change-over-panel MED



Flexible connection MSU



Manifold system MBS



Example for a central gas supply system

